



Professional Network Label Printer Range

Print durable labels from your PC, Mac, smartphone or tablet using wireless or wired network connectivity.

- Create durable labels up to 36mm in width
- High speed and high resolution printing
- Wired network* & Wi-Fi to print labels from several devices at once
- Advanced cutter with easy label peel function
- Include images, barcodes and frames on your labels
- Connect to data contained in spreadsheets to batch print many labels at once
- Software development kits available for Windows, iOS and Android devices
- Range of optional accessories to customise the printer to your needs



*PT-P950NW only

www.brother.co.za

NEXT TIME

LABEL IT

Offering the highest print speed and print resolution in their class, the PT-P900 series professional label printers produce durable labels up to 36mm in width. Print text, barcodes, images and logos onto laminated, durable labels that are suitable for indoor or outdoor use, and last for many years. Choose from wireless and wired network connectivity, and a range of optional accessories to create a customised label printing solution that suits your requirements.

P-touch



Key features at a glance

	PT-P900W	PT-P950NW
Prints durable labels from 6mm to 36mm in width	●	●
Large 32mm print height for near edge-to-edge printing	●	●
360dpi print resolution for crisp text, images and barcodes	●	●
High speed printing of up to 60mm/second	●	●
USB and Wi-Fi connectivity	●	●
Wired network connectivity (10/100 Base-TX)		●
Advanced cutter prints easy-peel labels in a continuous strip	●	●
Includes free professional desktop label design software for PC/Mac	●	●
Software development kits available to easily add label printing to your own software or apps	●	●
Merge text contained in Excel, .csv and MSDE/SQL databases to easily batch print many labels at once	●	●
Prints 1D and 2D industry standard barcodes	●	●
Free iOS/Android label apps to print labels from smartphones/tablets	●	●
Optional battery base and Li-ion rechargeable battery	●	●
Optional RJ25 to DB9M serial adapter	●	●
Optional Bluetooth interface		●
Optional Touch Panel with backlit LCD display to print custom labels without the use of a PC, including current or future calculated time and date		●



Professional label printers designed for any labelling task

With a wide range of colours combinations and tape widths up to 36mm, near borderless printing and high speed/high resolution print capabilities, these two label printers are ideal for facilities management, document archiving, asset labelling and creating on-demand labels whenever and wherever required.

Wired and wireless connectivity including Bluetooth

These compact desktop label printers can be connected to your PC or Mac using the integrated USB or Wi-Fi connections. The PT-P950NW can also connect to your wired network thanks to its 10/100 Base-TX network port, and an optional Bluetooth module allows it to easily connect directly to rugged tablets, portable PC's and to Bluetooth input devices such as barcode scanners.



Industrial label design software for PC and Mac

Both models use the free P-touch Editor label design software for Windows and Mac. It boasts advanced features normally found in expensive desktop applications such as industry standard 1D and 2D barcodes, import of logos and other graphics, and allows you to use the fonts installed on your computer. Link to a Microsoft Excel® spreadsheet or .csv file to print multiple labels quickly and efficiently.



Print from smartphones or tablets

Instantly create and print simple labels from your smartphone or tablet without needing to start your PC. The Brother iPrint&Label app wirelessly connects to the printer to let you design and print labels from your iOS or Android device. Or if you need to identify electrical and datacom cabling and equipment, use the Brother Cable Label Tool app to print labels for wrapping around cables or for sticking to faceplates, electrical distribution boards and other specialist equipment.

Include label printing as part of your solution

Software and app developers can use various software development kits for Microsoft Windows, iOS and Android devices to enable label printing from within your own software and apps. This makes these printers ideal to integrate into custom solutions, where durable labels are required.



Advanced cutter with easy-peel function

The advanced cutter can produce one long strip of labels that are easily peeled one-at-a-time, and ensures your labels are kept in the correct order. Or each label can be fully cut if required.





Print wherever and whenever required

There are situations where AC power may not be available, such as on construction sites, or if the label printer needs to be used on a portable trolley. Attach the optional battery base and rechargeable lithium-ion battery pack to allow label printing wherever and whenever required.

Print labels on demand without a PC

Ideal for the food, healthcare and laboratory markets, the optional Touch Panel Display Unit (for PT-P950NW only) lets you print labels without a connection to a PC. Design your label(s) and upload to the required location(s) indicated on the buttons. The user simply then needs to press the relevant button to print that label, on demand. Furthermore, the built-in clock allows labels to include current and future time/date - ideal for "Use By" or "Printed On" labels.



Optional accessories



PA-BB-002

Battery base for li-ion battery



PA-BT-4000LI

Lithium-Ion rechargeable battery



PA-SCA-001

RJ25 to DB9M serial adapter



PA-BI-002

Bluetooth interface (PT-P950NW only)



PA-TDU-003

Touch Panel display unit for stand-alone printing of labels (PT-P950NW only)

Brother P-touch TZe laminated labels

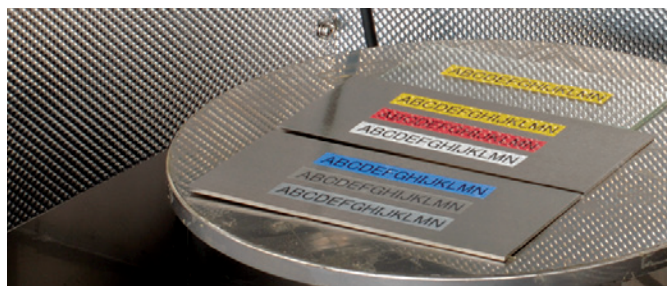
Unlike ordinary labels, Brother P-touch laminated TZe tapes consist of six layers of materials, resulting in a thin, extremely strong label. Characters are formed with a thermal transfer ink and sandwiched between two protective layers of PET (polyester film). We've tested them to the extreme, against the effects of abrasion, temperature, chemicals and sunlight. Results prove that Brother P-touch laminated labels out-perform competitor labels, so you can be confident of a professional quality label that has been designed to last.

Tested to the extreme

Brother P-touch laminated labels were tested under laboratory conditions and a summary of the results can be found below. More detailed information on the tests is available upon request.



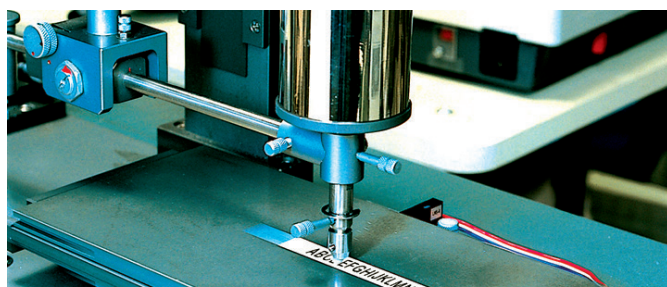
Temperature resistant: laminated labels were subjected to temperatures ranging from -80C to +150C for 240 hours, and the text was found to be unaffected.



Fade resistant: after laminated labels were placed in a fade-inducing chamber to simulate a year in sunny surroundings, the text was unaffected.



Water and chemical resistant: glass plates with laminated labels attached were immersed in water and various chemicals for two hours. The text was unaffected.



Abrasion resistant: after a 1kg sanding device was passed over the laminated labels 50 times, the text was unaffected.



Laminated



Temperature
Resistant



Water
Resistant



Fade
Resistant



Abrasion
Resistant



Chemical
Resistant



Easy
Peel



Strong
Adhesive

TZe Laminated Tape Range

	6 mm	9 mm	12 mm	18 mm	24 mm	36 mm
Standard Tape - 8 metres						
Black on Clear	TZe-111	TZe-121	TZe-131	TZe-141	TZe-151	TZe-161
Red on Clear			TZe-132			
Blue on Clear			TZe-133			
White on Clear			TZe-135			
Black on White	TZe-211	TZe-221	TZe-231	TZe-241	TZe-251	TZe-261
Red on White		TZe-222	TZe-232	TZe-242	TZe-252	TZe-262
Blue on White		TZe-223	TZe-233	TZe-243	TZe-253	TZe-263
Gold on Black			TZe-334	TZe-344	TZe-354	
White on Black	TZe-315	TZe-325	TZe-335	TZe-345	TZe-355	
Black on Red		TZe-421	TZe-431	TZe-441	TZe-451	TZe-461
White on Red			TZe-435			
Black on Blue		TZe-521	TZe-531	TZe-541	TZe-551	TZe-561
White on Blue			TZe-535		TZe-555	
Black on Yellow	TZe-611	TZe-621	TZe-631	TZe-641	TZe-651	TZe-661
Black on Green		TZe-721	TZe-731	TZe-741	TZe-751	
White on Green			TZe-735		TZe-755	
Fluorescent Tape - 5 metres						
Black on Orange			TZe-B31		TZe-B51	
Black on Yellow			TZe-C31		TZe-C51	
Matt Tape - 8 metres (**5 metres)						
White on Silver			TZe-MQI35**			
White on Berry Pink			TZe-MQP35**			
White on Satin Gold			TZe-MQ835**			
Black on Matt Silver			TZe-M931		TZe-M951	TZe-M961
Flexible ID Tape - 8 metres						
Black on White		TZe-FX221	TZe-FX231		TZe-FX251	
Black on Yellow		TZe-FX621	TZe-FX631			
Strong Adhesive Tape - 8 metres						
Black on White		TZe-S221	TZe-S231	TZe-S241	TZe-S251	TZe-S261
Black on Yellow		TZe-S621	TZe-S631	TZe-S641	TZe-S651	TZe-S661
Fabric Tape - 3 metres						
Blue on White			TZe-FA3			
Blue on Pink			TZe-FAE31			
Blue on Blue			TZe-FA531			
Acid Free Tape - 8 metres						
Black on Clear			TZe-AF131			
Black on Clear			TZe-AF231			
Stencil Tape - 3 metres						
Black on White					TZe-STE151	TZe-STE161
Higher Grade Tape - 8 metres						
Black on White					TZe-HGE251	TZe-HGE261
Security Tape Tape - 8 metres						
Black on White						TZe-SE4

HSe heat-shrink tube tape range (1.5 metres)

	5,8mm	8,8mm	11,7mm	17,7mm
Black on White	HSe-211	HSe-221	HSe-231	HSe-241
Cable Diameter	1.7-3.2mm	2.6-5.1mm	3.6-7.0mm	5.4-10.6mm

FLe die-cut label range (72 labels)

45mm x 21mm
FLe-2511
FLe-6511
FLe-7511



Specifications

Label printing

Prints labels up to 36mm in width
Maximum print height of 32mm for near edge-to-edge printing
360dpi print resolution for crisp, legible text, images and barcodes
Fast print speed of 60mm/second
Built-in automatic label cutter with easy-peel function
Minimum label length: 4mm | Maximum label length: 1 metre
Print up to 17 lines per label
Number of copies: 1-999

Connectivity: Wired

USB: Windows®(USB1.1, 2.0, 3.0 protocol) | Mac (USB 1.0, 2.0 protocol)
Network: 10 Base-T/100 Base-TX (PT-P950NW only)
Serial: RS-232C (for printing with ESC/P commands only. Requires optional serial adapter)

Connectivity: Wireless

Wireless Direct: IEEE802.11n | Ad-Hoc mode: IEEE802.11b | Infrastructure mode: IEEE802.11b/g/n | WPS 2.0

Connectivity: Bluetooth (optional accessory for PT-P950NW)

Bluetooth 2.1+EDR | Profiles: SPP, OPP

Printer emulations/printer modes

P-touch Raster | ESC/P | P-touch Template

Label creation (PC/Mac)

Uses P-touch Editor professional label design software
Link to data stored in Microsoft® Excel® (Windows®) and .csv (Mac) files, to merge onto your labels
Choose any of the fonts installed on your PC/Mac to fully customise your label
Supports popular image formats (.bmp, .dib, .jpg, .tif, .ico, .wmf)
Special cable labelling wizard to easily create labels for cables, patch panels, faceplates and switches
Use the date/time stamp to automatically include current or future date/time on your labels

Barcode protocols supported:

1D: CODE39, CODE128, ITF 2/5, EAN13, EAN8, UPC-A, UPC-E, CODABAR, GS1-128 (UCC/EAN128)
2D: QR Code, PDF417, Data Matrix, Aztec Code, RSS-14 (Standard, Truncated, Stacked, StackedOmni), RSS-Limited, RSS Expanded (Standard, Stacked)

Dimensions and weights

118mm (w) x 192mm (d) x 146mm (h) | 1.48kg (PT-P900W) / 1.51kg (PT-P950NW)

Supplied with printer

36mm black on white laminated label cassette (8m)
AC adapter
USB cable
User guide

Tape types supported

TZe tape cassettes: 6mm-36mm
HSe heat-shrink tube: 5.8mm-23.6mm
FLe die-cut labels: 45mm x 21mm size

System Requirements

Operating Systems: Microsoft® Windows Vista® | Microsoft® Windows® 7 | Microsoft® Windows® 8 | Microsoft® Windows® 8.1
Microsoft® Windows® 10 | Microsoft® Windows Server® 2008 | Microsoft® Windows Server® 2008 R2 | Microsoft® Windows Server® 2012
Microsoft® Windows Server® 2012 R2 | Mac OS X 10.9.5/10.10.x/10.11.x

Hard disk space: Windows®: More than 70MB | Mac: More than 500MB

System memory: As per operating system requirements

Microsoft® Office® support for P-touch add-in:

Microsoft® Word 2007/2010/2013/2016 | Microsoft® Excel® 2007/2010/2013/2016 | Microsoft® Outlook® 2007/2010/2013/2016

Microsoft, Windows, Windows Server and Windows Vista are either registered trademarks or trademarks of Microsoft Corporation in the United States and/or other countries. Apple, Mac, Mac OS, iPhone, iPad and iPod touch are trademarks of Apple Inc., registered in the U.S. and other countries.



Brother International South Africa

96 Sovereign Drive, Route 21 Corporate Park, Irene
Tel: +27 (0) 12 - 345 5332 Fax: +27 (0) 12 - 345 3886

www.brother.co.za <http://solutions.brother.com>

